



GENERAL HYDROPONICS®

FloraBloom®

Advanced Nutrient System®

FloraBloom® provides minerals for the reproductive growth stage- Flowering, Fruiting and Seed Production.

- Combine FloraBloom with FloraMicro to provide a specialized nutrient for rapidly growing plants during the flowering and fruiting growth phase.
- Mix precise formulas for specific applications by combining FloraMicro, FloraGro plus FloraBloom. This "building block" system enables you to create tailor-made nutrient mixes for many different types of plants and each phase of growth: seedling, cutting, structural, flowering and fruiting.
- Our combination of primary and secondary nutrients keep nutrients fully water soluble and available to plants.
- Ideal for all hydroponic applications and as a nutrient supplement for potted plants.

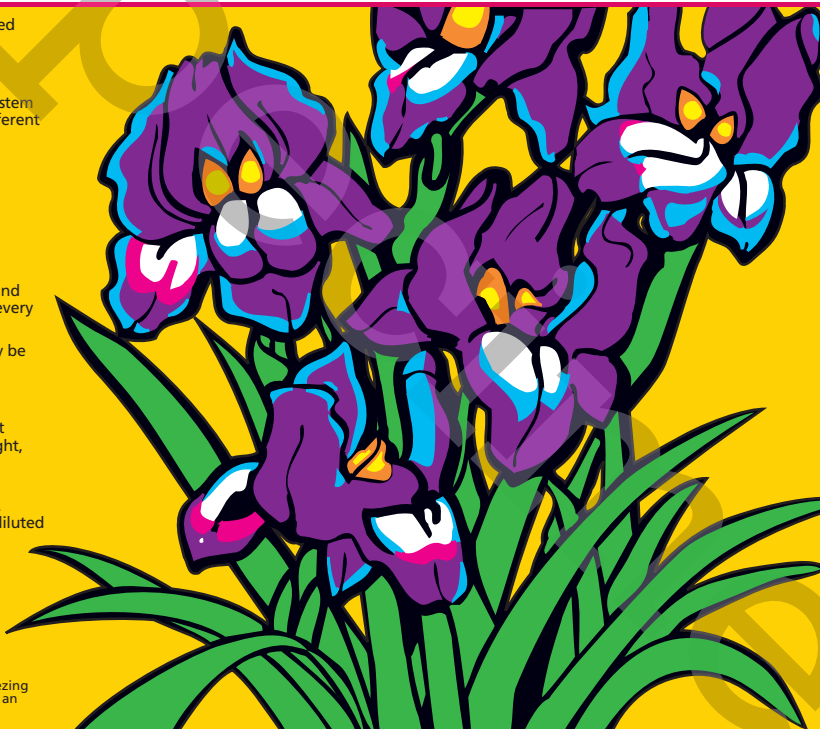
FOR BEST RESULTS:

- Use a conductivity or ppm meter to monitor water quality and control nutrient strength. Drain, discard and replace nutrient every week or two to prevent nutrient imbalance.
- Maintain nutrient pH between 5.5 and 6.5. Adjustment may be necessary since water quality and pH vary both regionally and seasonally.
- Refer to the **Basic Applications Table** for general mixing recommendations. Please measure accurately. Reduce nutrient strength if plants show signs of stress or if growing in very bright, hot or dry environments.

SHAKE WELL BEFORE MIXING. Always add FloraMicro to fresh water first and stir well, then add FloraGro and/or FloraBloom. Never combine FloraMicro with FloraGro or FloraBloom in undiluted form; doing so may cause nutrient lockout making some minerals unavailable.

This product should be used as part of a complete fertilizer program.

This product is concentrated to the limit of solubility. Protect from freezing and direct sunlight. If crystallization occurs, mix entire contents with an equal amount of hot water and double the amount used.



0 - 5 - 4 GUARANTEED ANALYSIS

| | |
|---|------|
| Available Phosphate (P ₂ O ₅)..... | 5.0% |
| Soluble Potash (K ₂ O)..... | 4.0% |
| Magnesium (Mg)..... | 1.5% |
| 1.5% Water Soluble Magnesium (Mg) | |
| Sulfur (S)..... | 1.0% |
| 1.0% Combined Sulfur (S) | |

Derived from: Magnesium Carbonate, Magnesium Phosphate, Magnesium Sulfate, Phosphoric Acid, Potassium Carbonate, Potassium Phosphate, and Potassium Sulfate.

Information regarding the contents and levels of metals in this product is available on the internet at <http://www.aapfco.org/metals.htm> F-1109

Basic Applications Table

| | FloraGro | | FloraMicro | | FloraBloom | |
|--------------------------------------|----------------|------------------|----------------|------------------|----------------|------------------|
| | 1/4 tsp/gallon | 33 ml/100 liters | 1/4 tsp/gallon | 33 ml/100 liters | 1/4 tsp/gallon | 33 ml/100 liters |
| Cuttings and Seedlings..... | 1/4 | 33 | 1/4 | 33 | 1/4 | 33 |
| General Purpose - Mild Vegetative... | 1 | 132 | 1 | 132 | 1 | 132 |
| Aggressive Vegetative Growth..... | 3 | 396 | 2 | 264 | 1 | 132 |
| Transition to Bloom..... | 2 | 264 | 2 | 264 | 2 | 264 |
| Blooming and Ripening..... | 1 | 132 | 2 | 264 | 3 | 396 |

These values are intended to be used without supplements. When using supplements, please refer to genhydro.com for complete Feed Programs.

| U.S. to Metric Conversions | Teaspoon | Tablespoon | Fl. oz. | Quart | U.S. Gallon |
|----------------------------|----------|------------|---------|--------|--------------|
| | 5 ml | 15 ml | 30 ml | 946 ml | 3.785 Liters |

0 - 5 - 4

946 ml (1 QUART)

KEEP OUT OF REACH OF CHILDREN

STORE IN A COOL DARK PLACE



GH

genhydro.com

Manufactured by GH Inc.,
P.O. Box 1576 Sebastopol, CA 95473, USA

